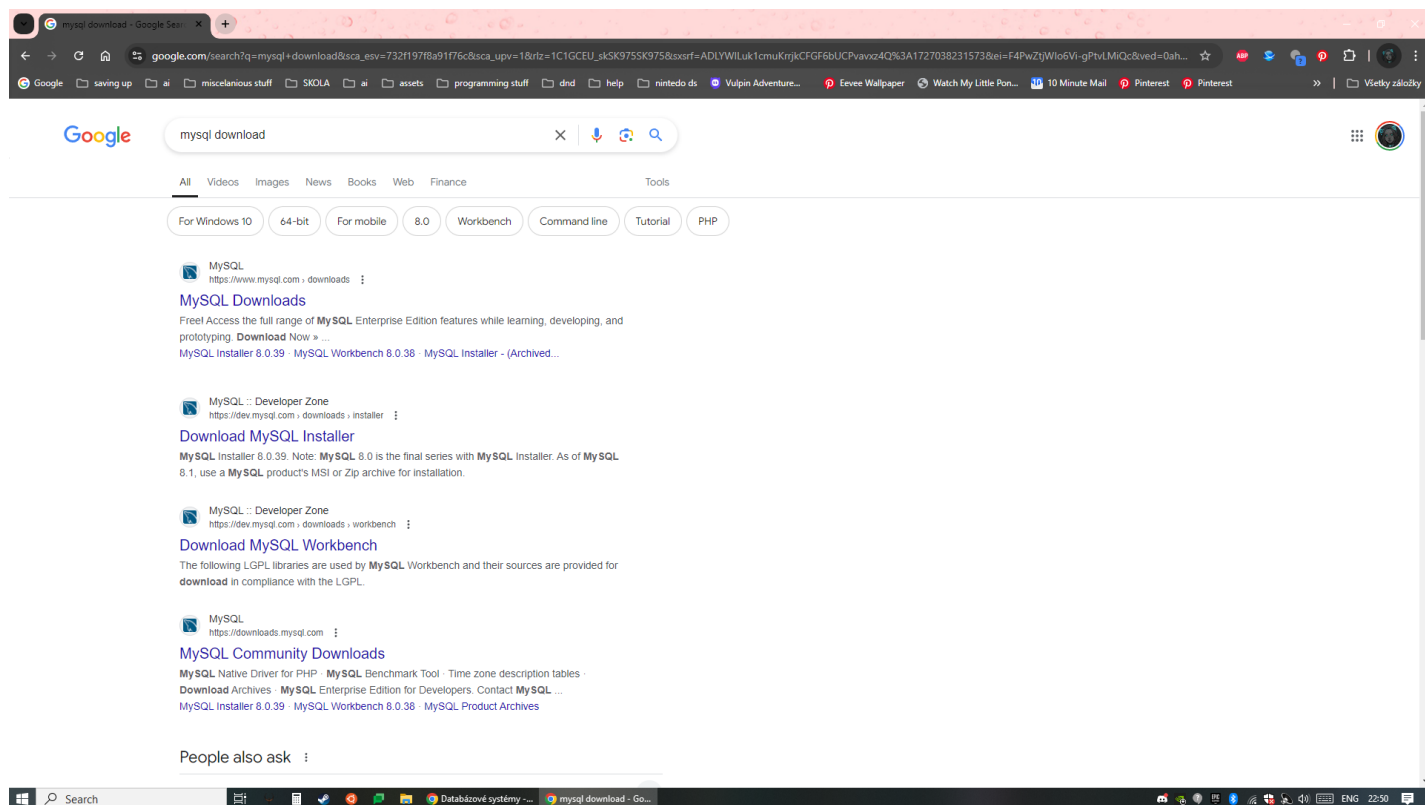
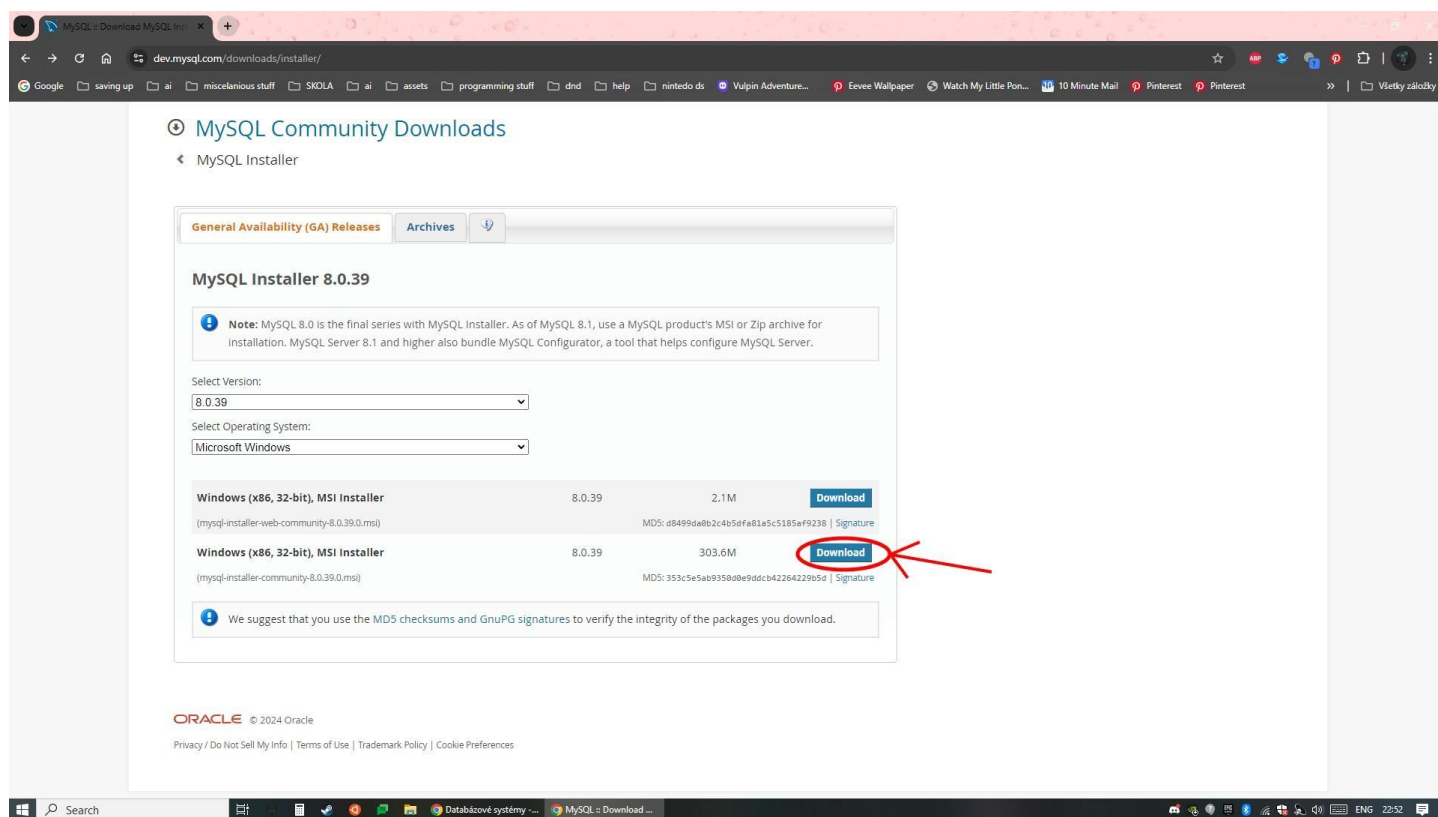


Návod na stiahnutie MySQL pre Windows

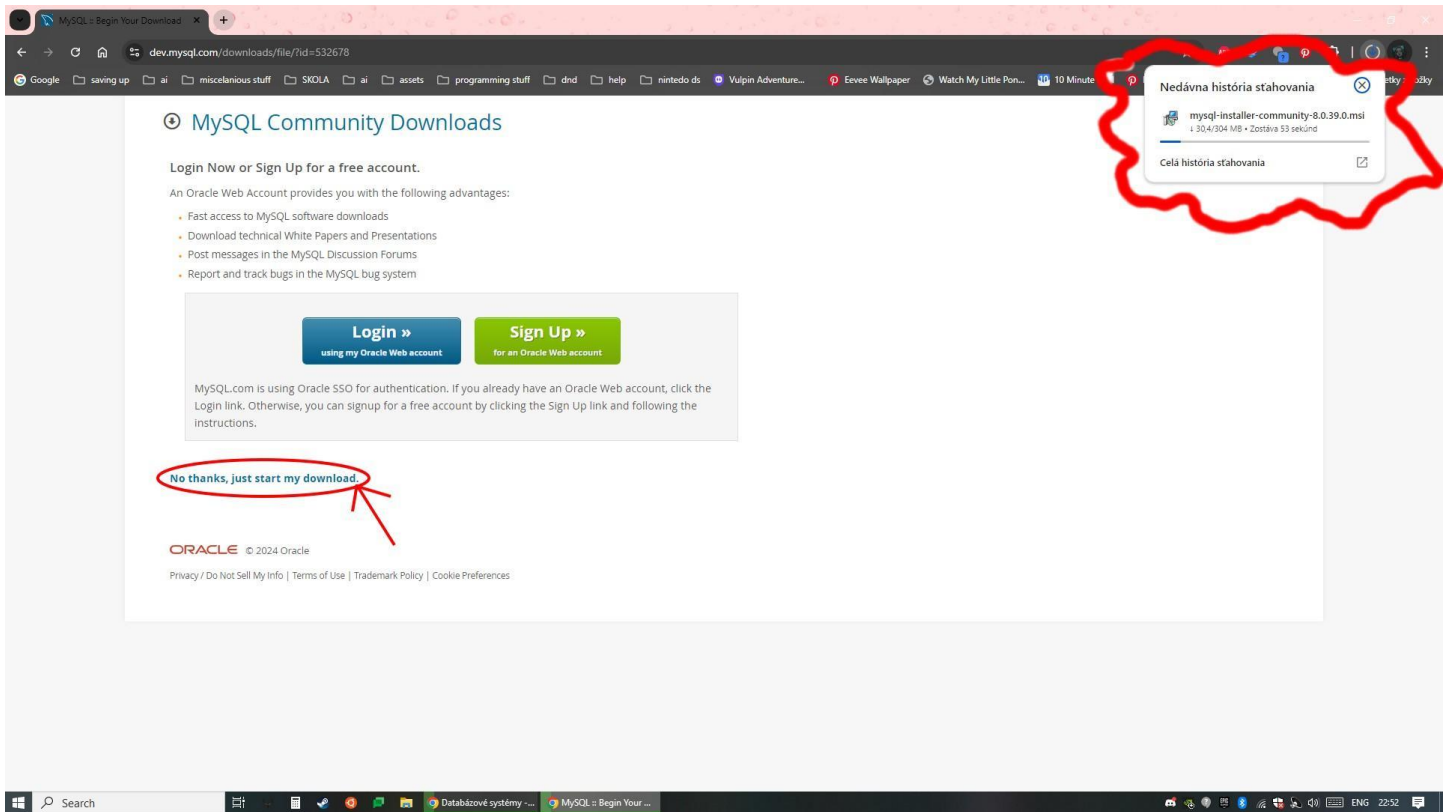
1. V google vyhľadáme “mysql download” alebo “mysql installer” a klikneme na druhý link kde píše installer (ale ideme rovno na <https://dev.mysql.com/downloads/installer/>)



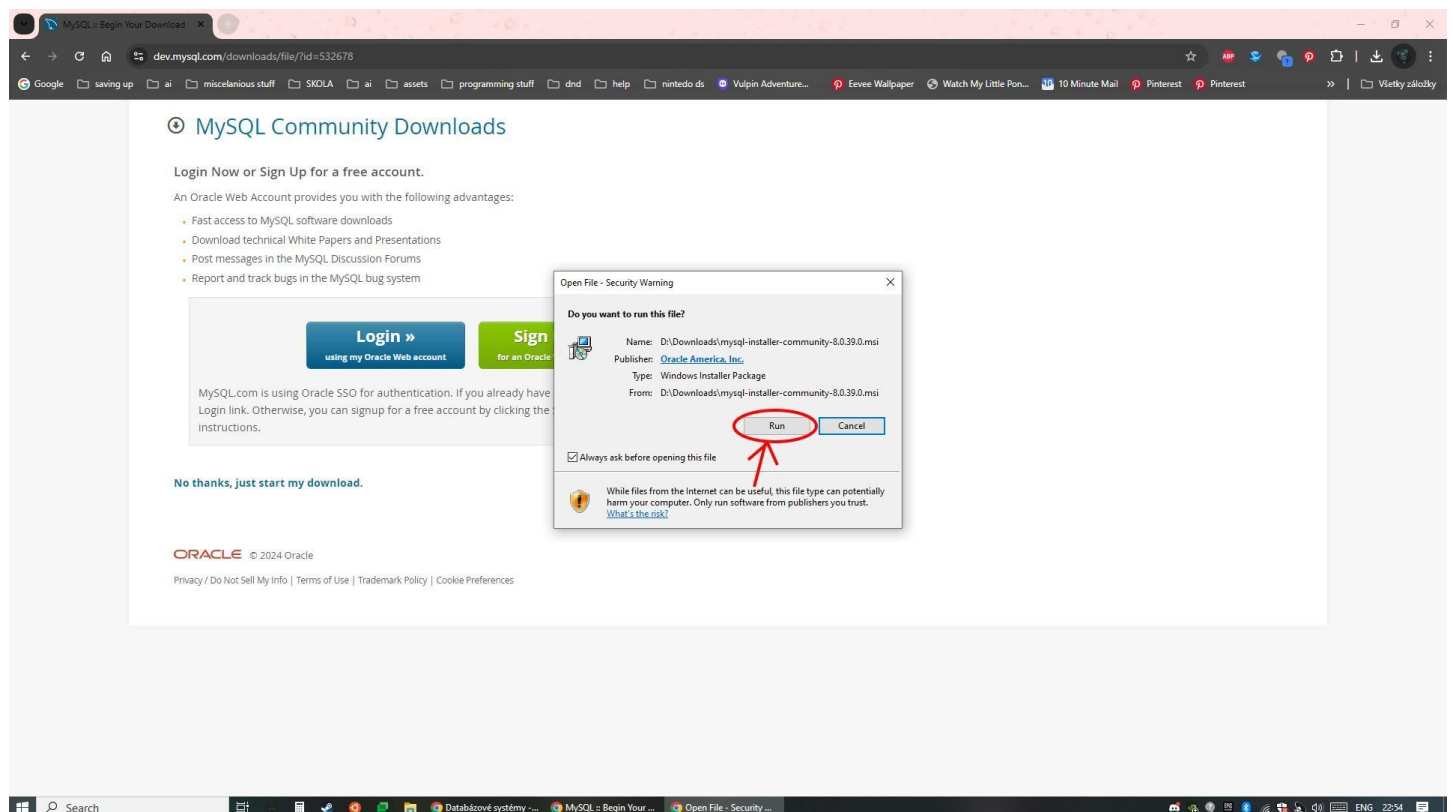
2. Klikneme na download aby sme stiahli installer



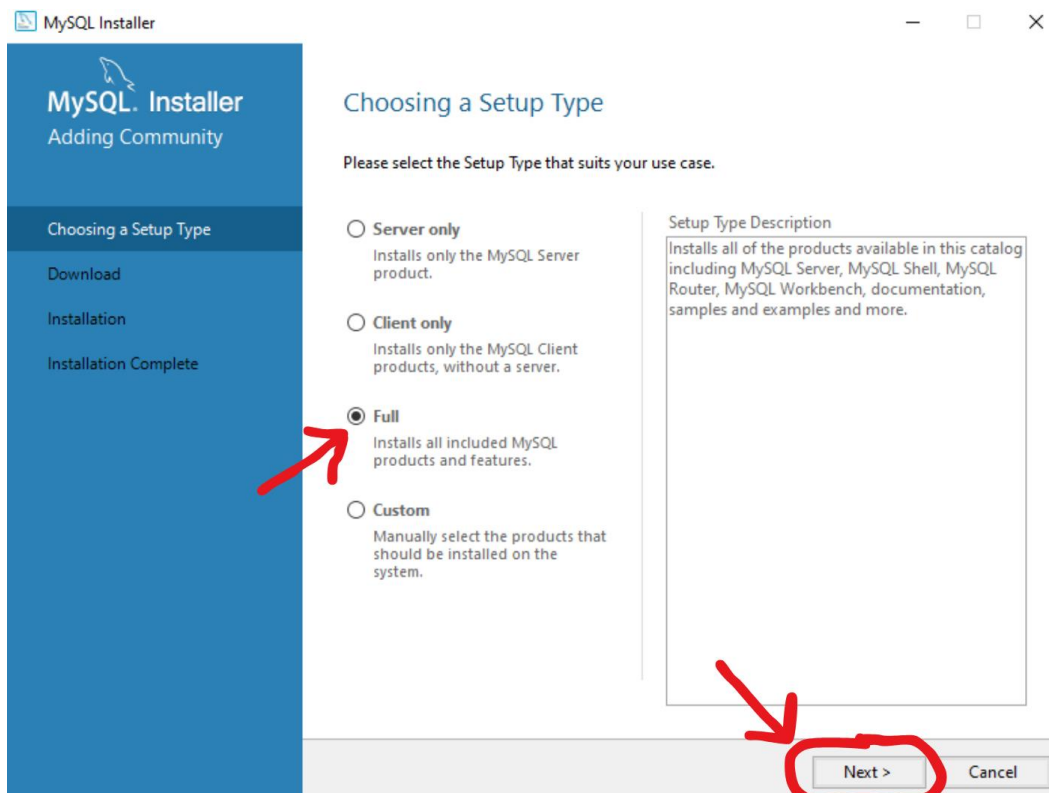
3. Klikneme na “No thanks, just take me to my download” počkáme kým sa nám stiahne installer



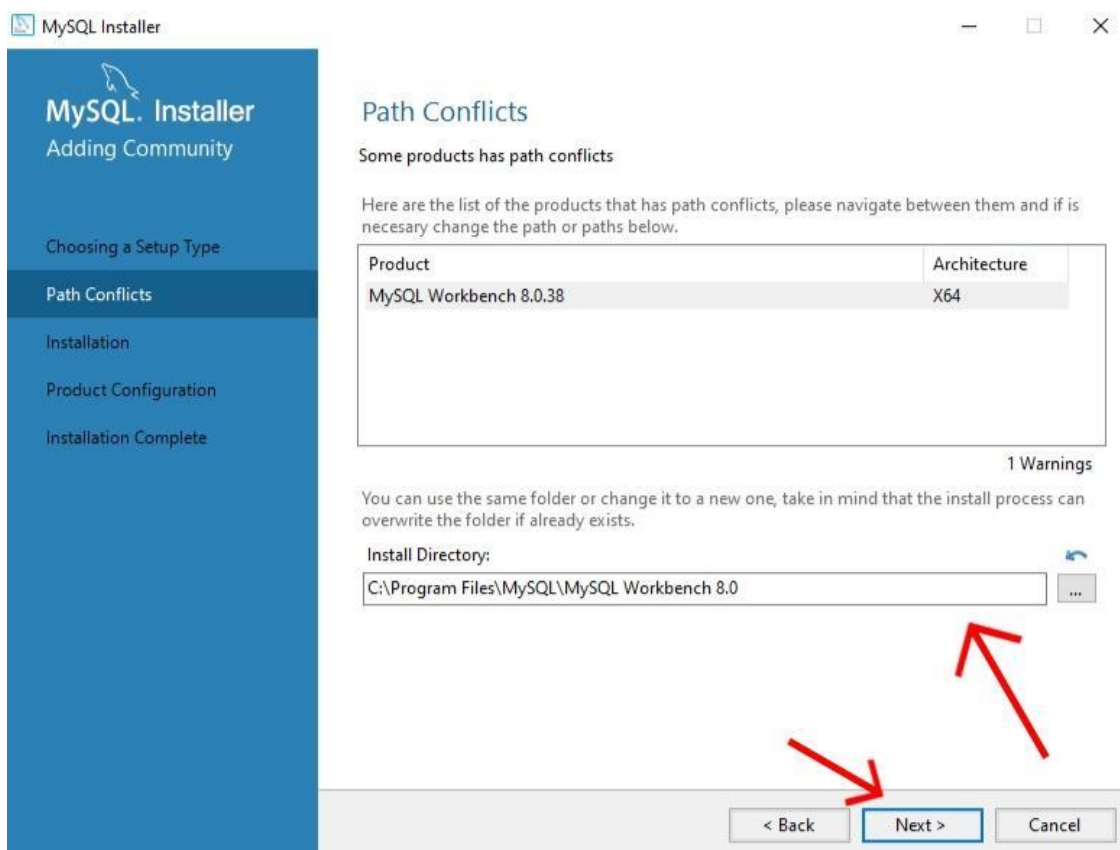
4. Otvoríme installer a klikneme na “Run”



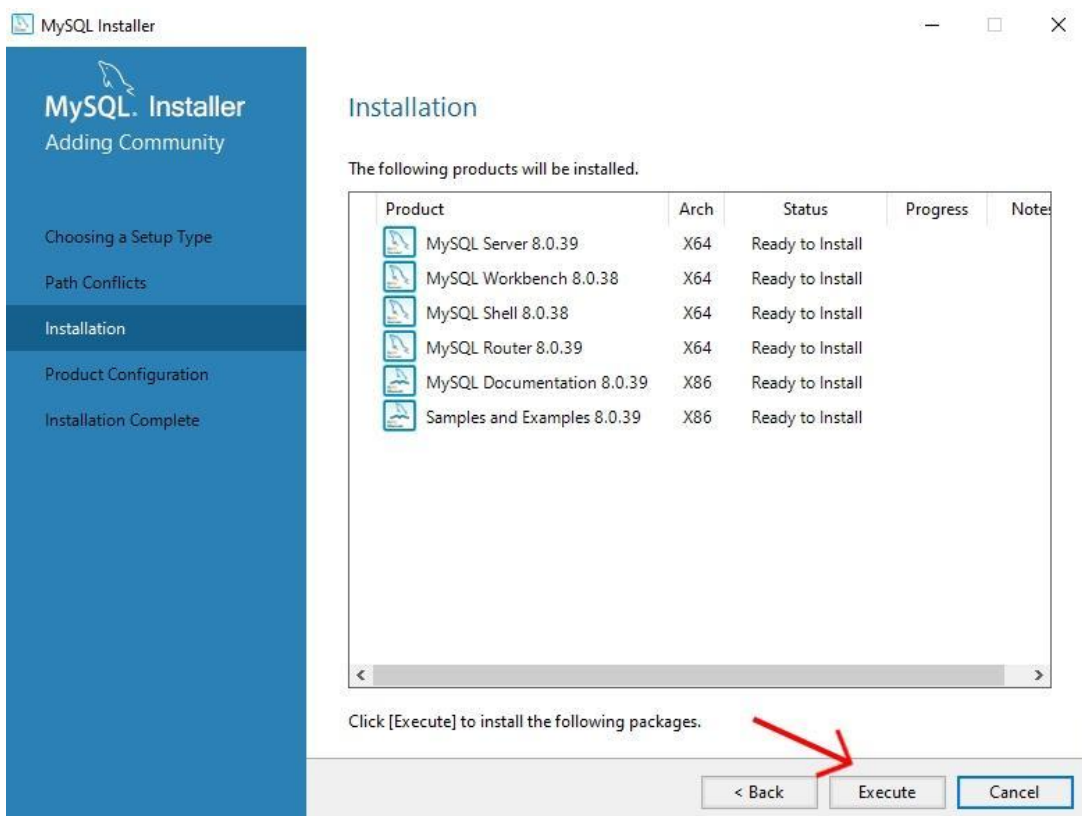
5. Vyberieme si ktorý balíček nám treba, pre jednoduchosť som vybrala full ktorý obsahuje všetko, a klikneme "Next"



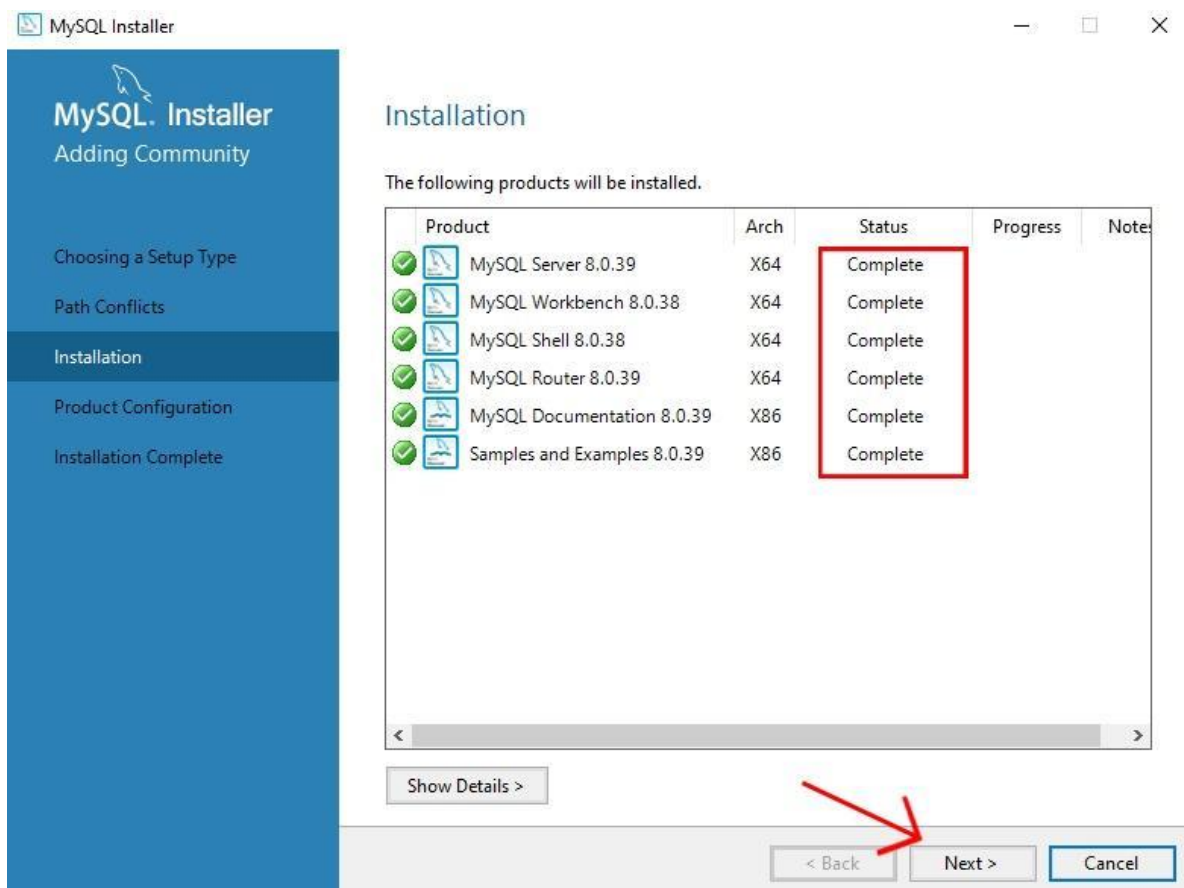
6. Vyberieme si kde si chceme MySql uložiť a klikneme "Next"



7. Vypíše nám veci ktoré sa budú sťahovať, klikneme na “Execute”

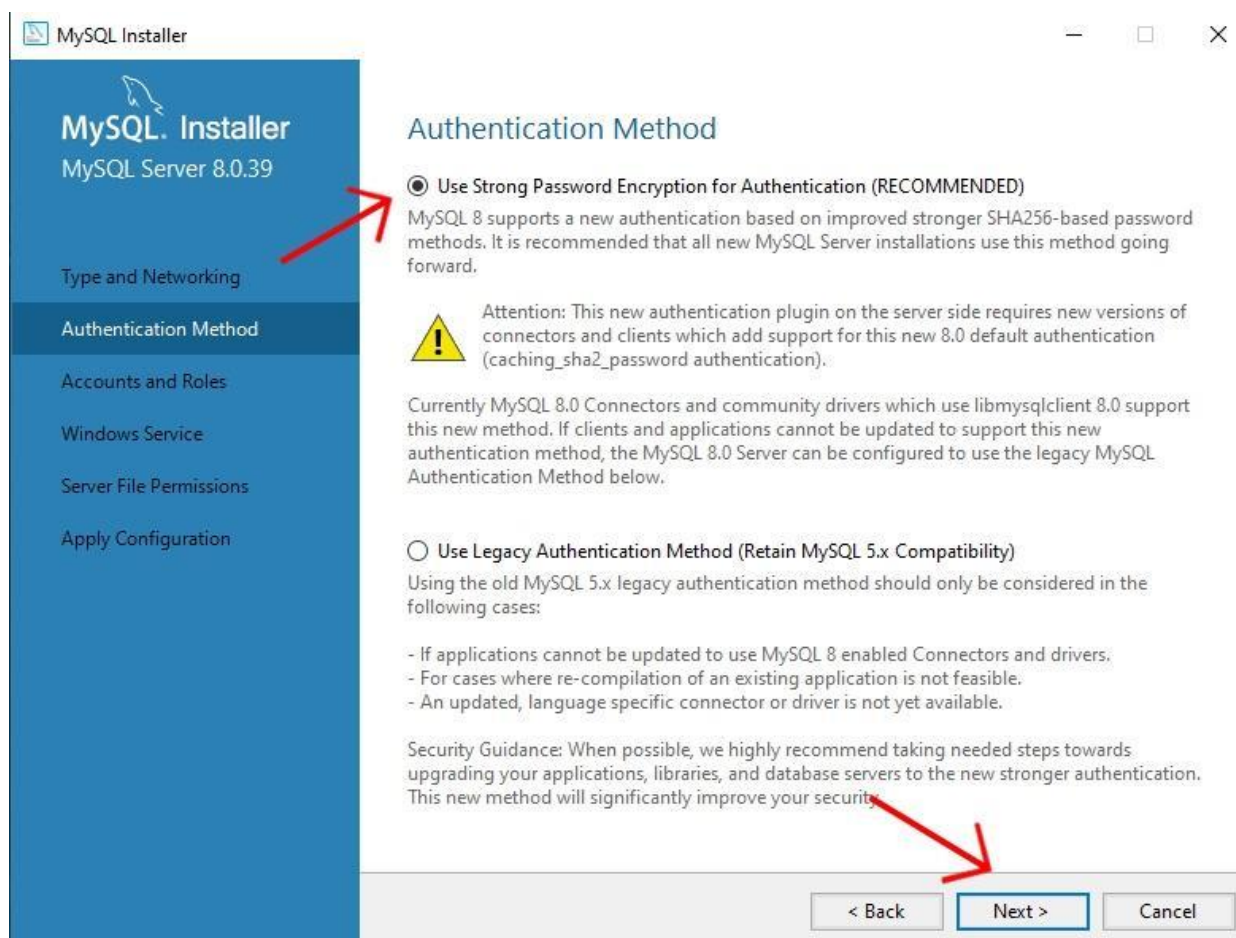


8. Počkáme si kým sa nám všetko stihane (keď pri každej položke bude napísané “Completed”) a stlačíme “Next”

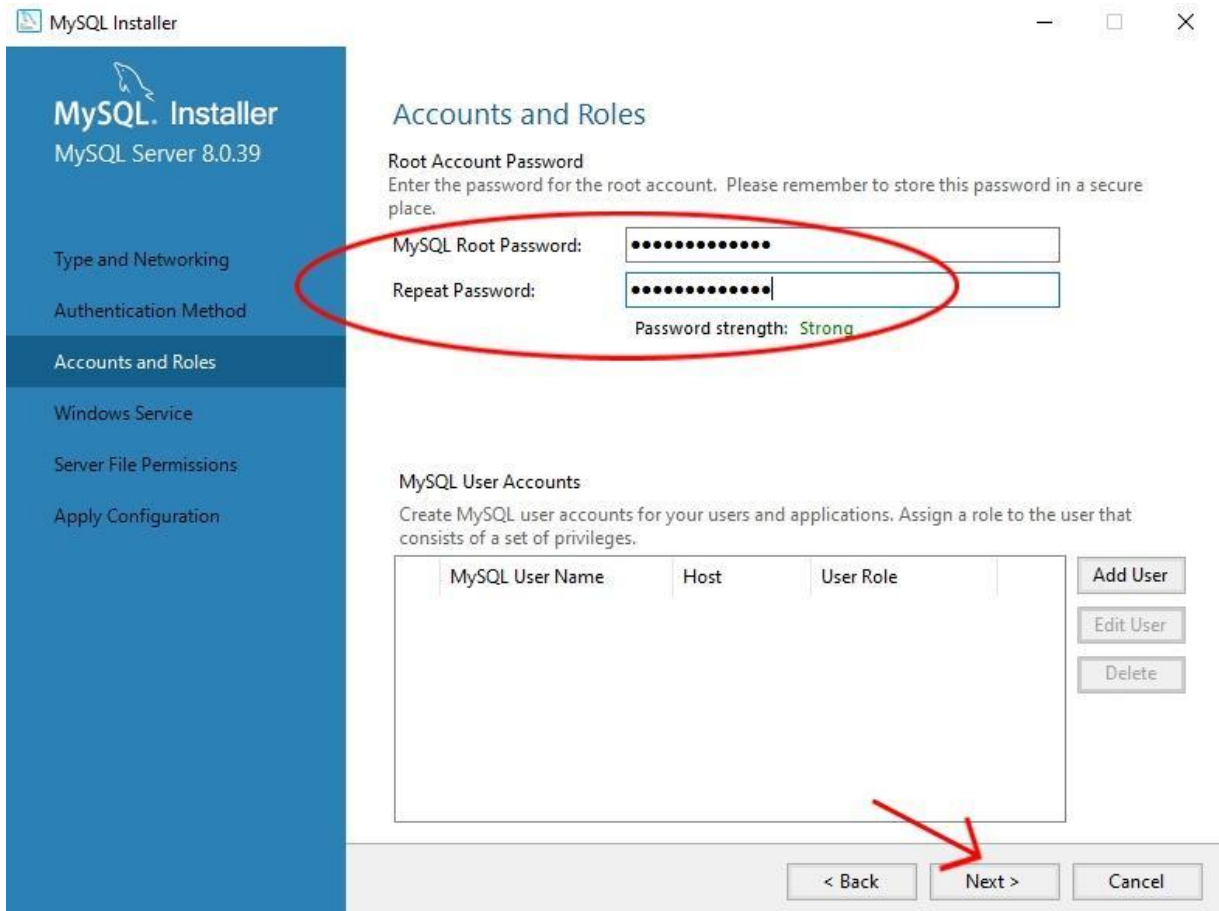


9. Ak si nechcete nastavovať server, cez "Next" preskočíme "Product configuration" a "Type and Networking"

10. Pre ochranu, odklikneme prvé okienko a stlačíme "Next"

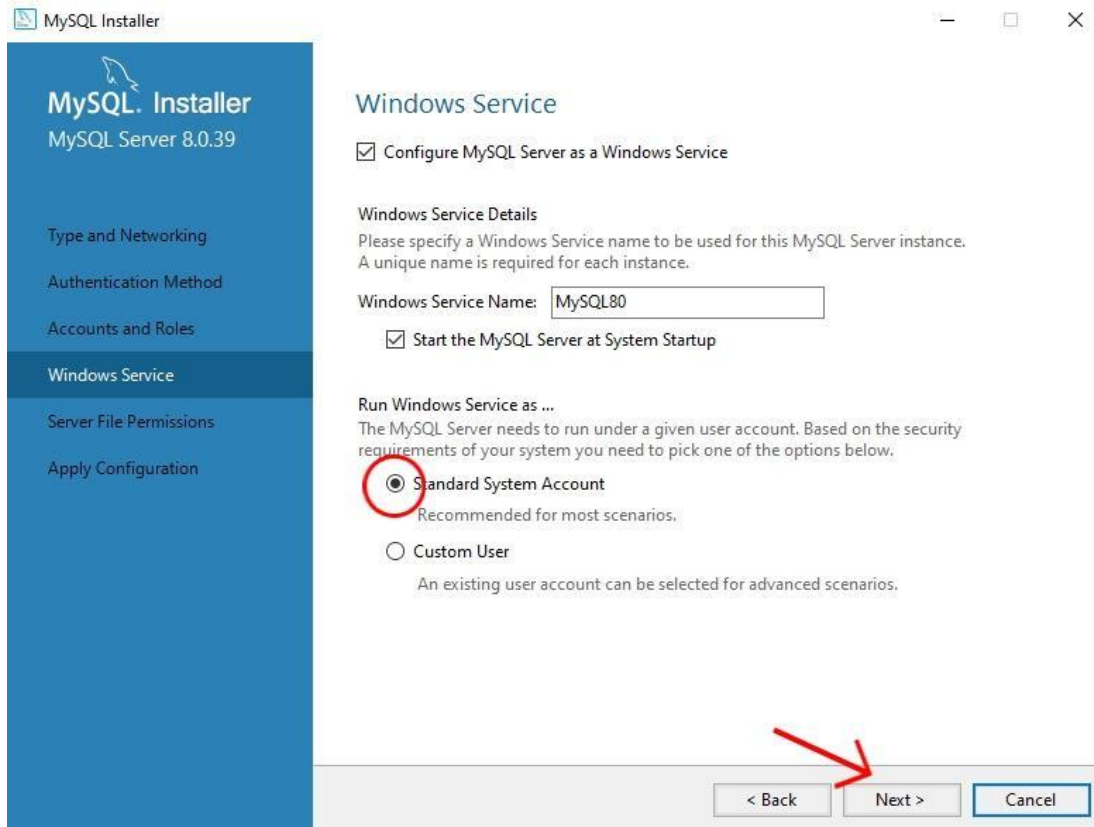


11. Zadáme dostatočne silné heslo (ktoré si aj zapamätáme) a stlačíme "Next"

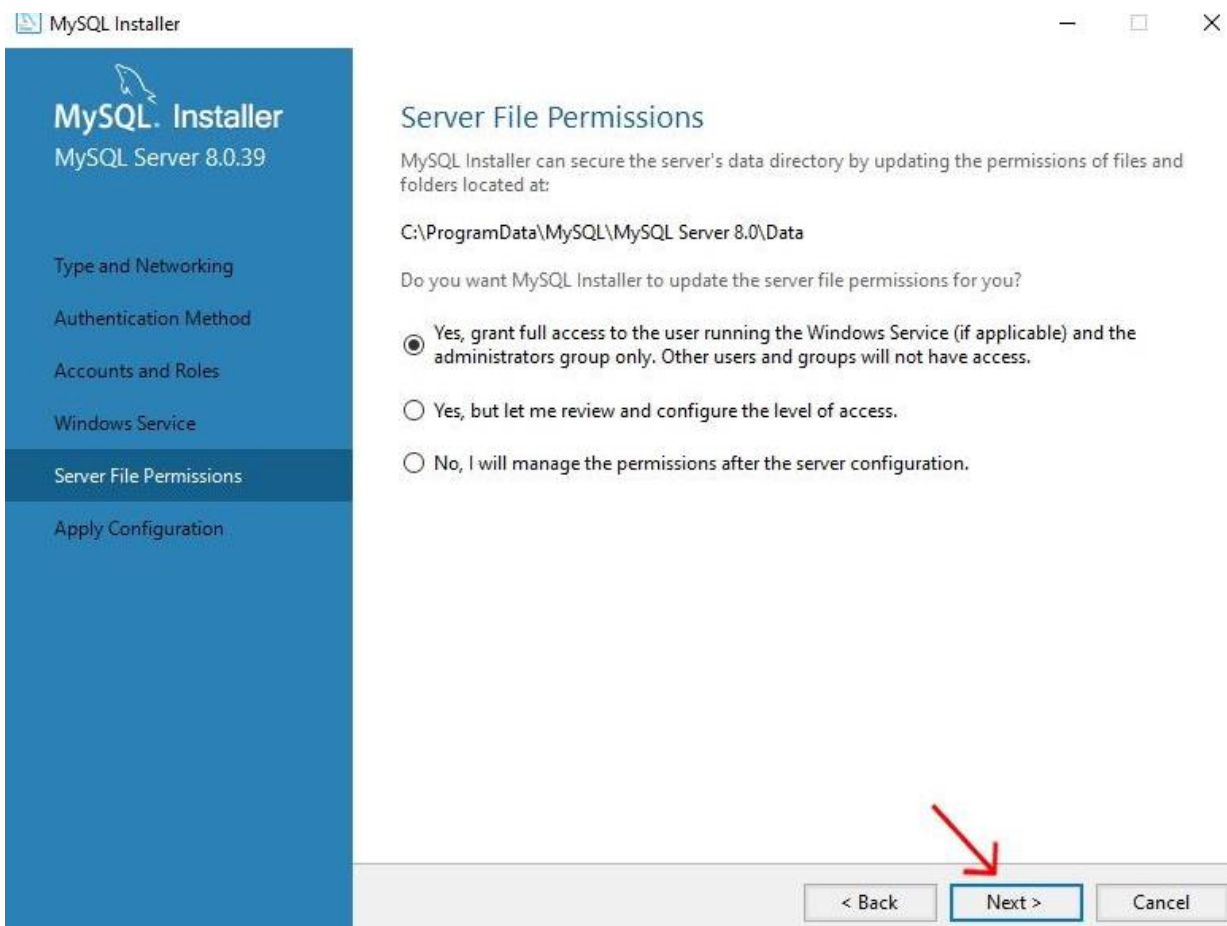


12.

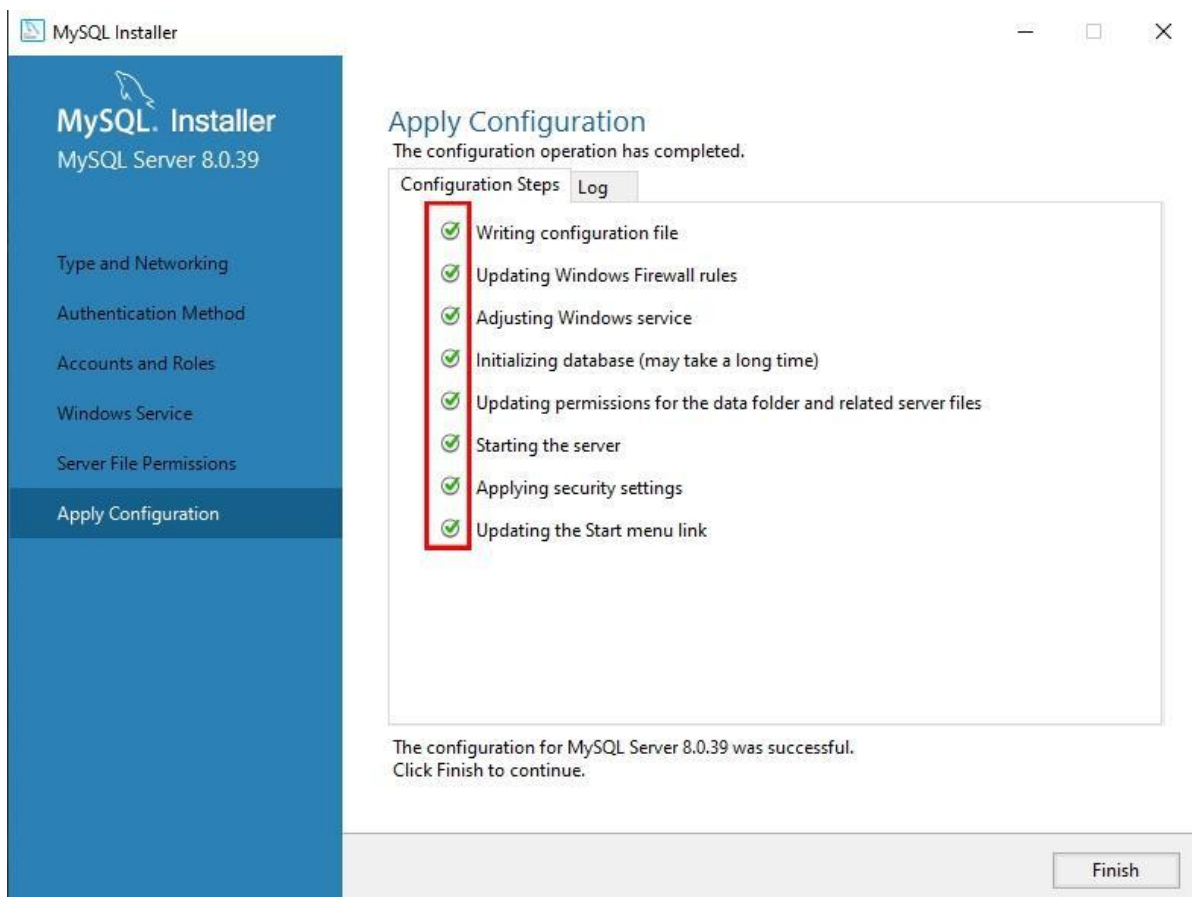
Vyznačíme "Standart System Account" a stlačíme "Next"



13. Necháme vyznačené prvé a stlačíme "Next"

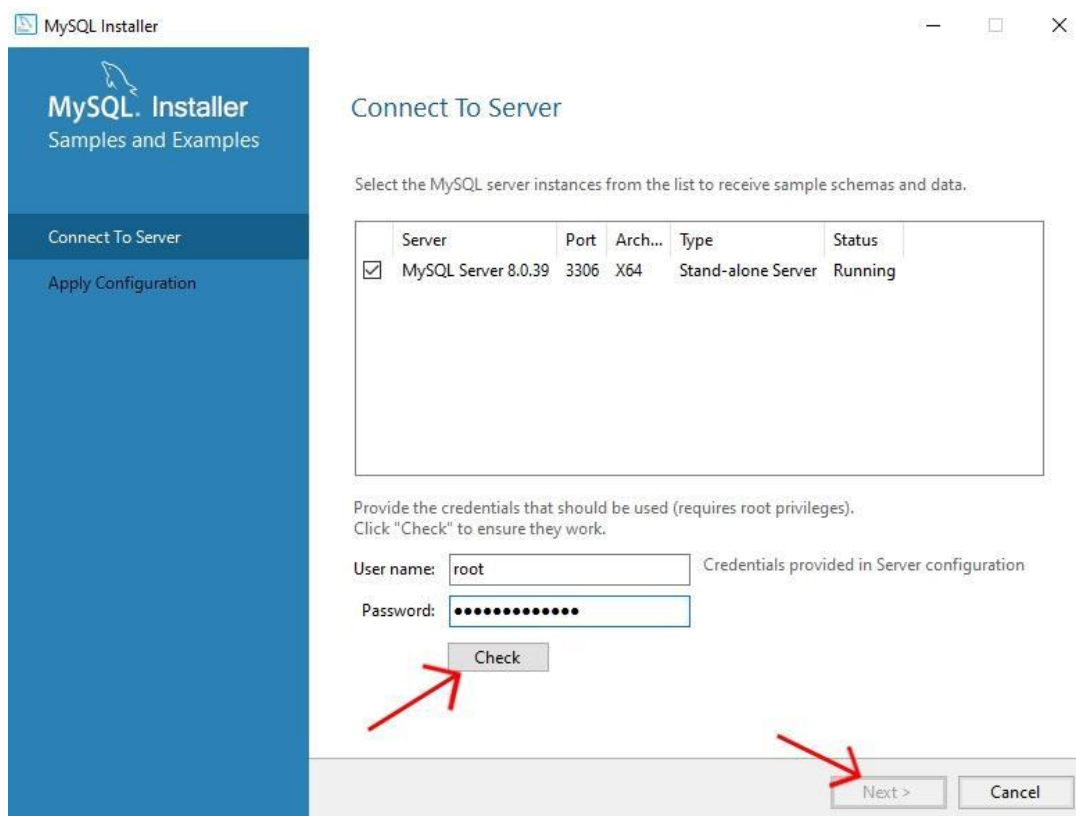


14. Stlačíme "Execute" a počkáme dokým sa všetko nastaví (zelená fajky) a stlačíme "Finish"



15. Pri "Product Configuration" len stlačíme "Next", pri "MYSQL Router Configuration" stlačíme "Finish". Potom vyskočí "Product Configuration" znovu, kde len stlačíme "Next"

16. Skontrolujeme si heslo cez "Check", ak bude správne môžeme stlačiť "Next"



17. Pri "Apply Configuration" stlačíme "Execute", počkáme kým sa nám to vyznačí zelenou a stlačíme "Finish"

18. Pri "Product Configuration" stlačíme "Next"

19. "Installation Complete" a máme nainštalované =), stačí stlačit "Fish a máme hotovo

MySQL Installer

MySQL Installer

Adding Community

- Choosing a Setup Type
- Path Conflicts
- Installation
- Product Configuration
- Installation Complete**


Installation Complete

The installation procedure has been completed.

[Copy Log to Clipboard](#)

- Start MySQL Workbench after setup
- Start MySQL Shell after setup

The MySQL Shell is an advanced MySQL client application that can be used to work with single MySQL Server instances. Further, it can be used to create and manage InnoDB Cluster, an integrated solution for high availability and scalability of MySQL databases, without requiring advanced MySQL expertise.



```
graph LR; ClientApp[Client App] <--> MySQLRouter[MySQL Router]; MySQLRouter <--> MySQLShell[MySQL Shell]; MySQLShell <--> InnoDBCluster((InnoDB Cluster));
```

Refer to the following links for documentation, tutorials and examples on MySQL Shell:

- [MySQL Shell Documentation](#)
- [Setting up a Real World Cluster Blog](#)
- [The All New MySQL InnoDB ReplicaSet Blog](#)
- [Changing Cluster Options Live Blog](#)

[Finish](#)